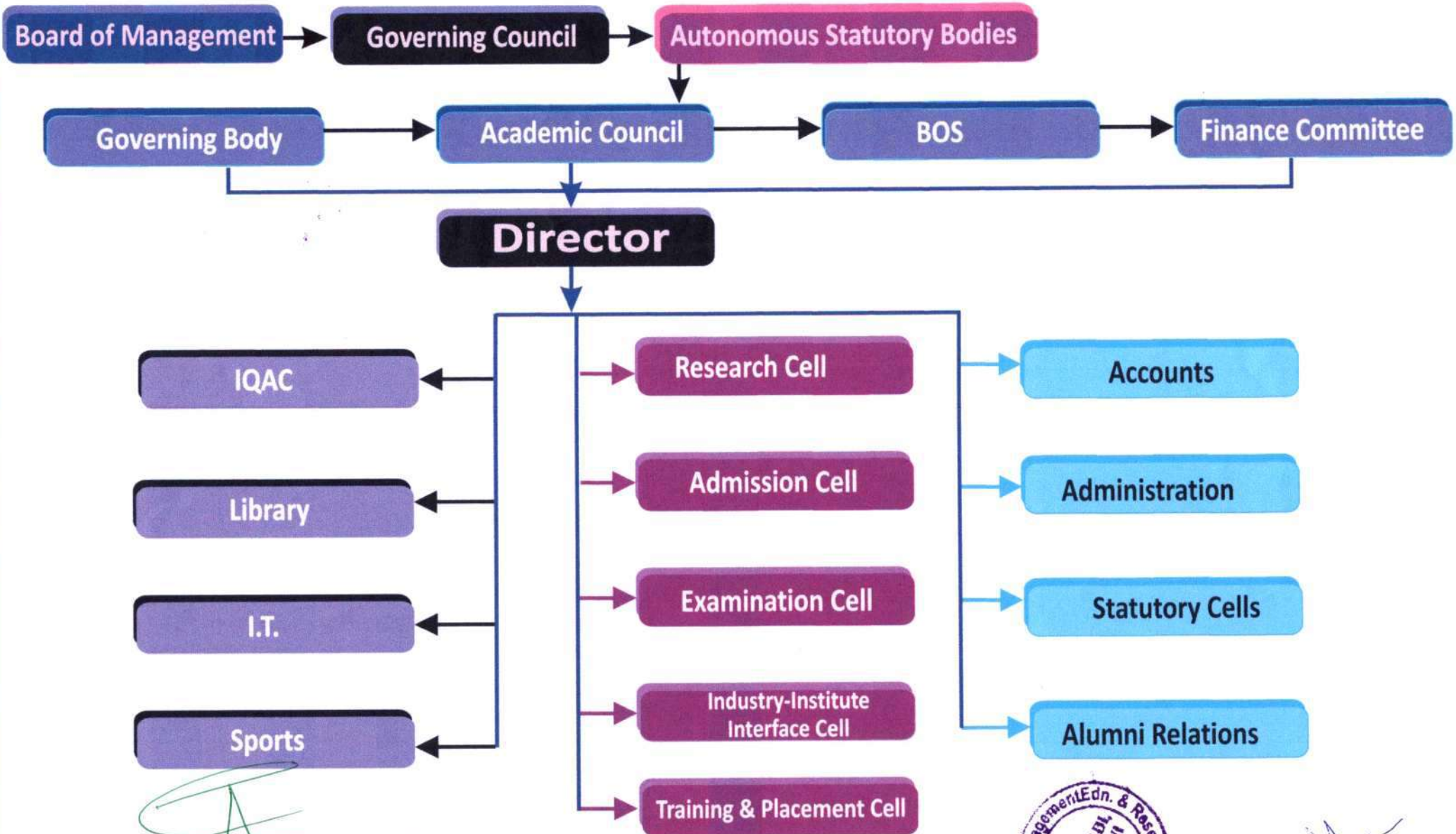


KLS-IMER, Autonomous, Belagavi

4.4.2 There are established, Systems and Procedures for maintaining and utilizing Physical, Academic & Support Facilities -classrooms, laboratory, library, sports complex, computers etc. (Institution's Policy with details of systems and procedures)



DIRECTOR
KLS. Institute of Management
Education & Research

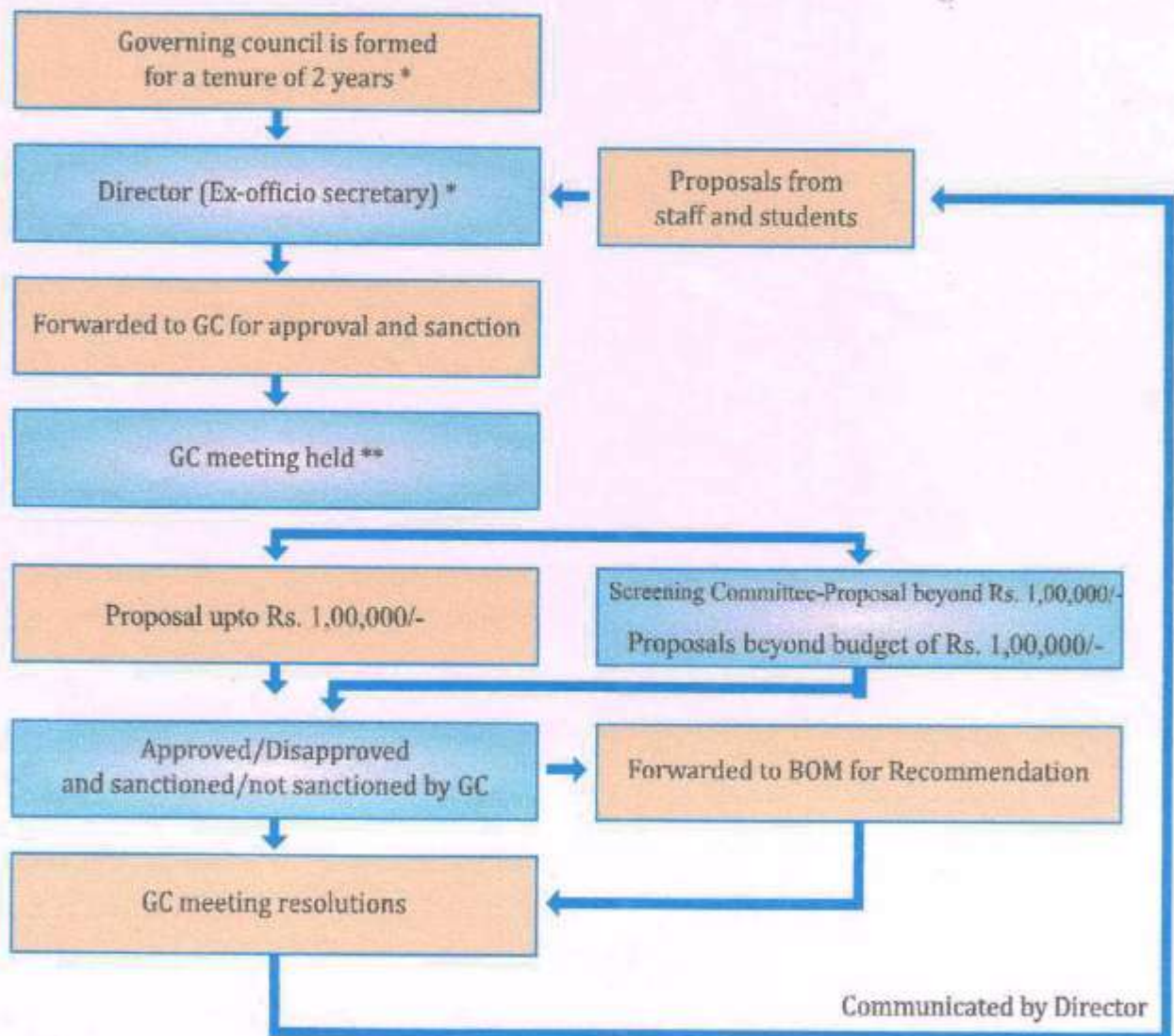


CHAIRMAN
GOVERNING COUNCIL
KLS. I.M.E.R.

KLS - IMER, Autonomous, Belagavi

4.4.2 There are established, Systems and Procedures for maintaining and utilizing Physical, academic & support facilities -classrooms, laboratory, library, sports complex, computers etc. (Institution's Policy with details of systems and procedures)

Formation of GC and its role in Management of the Institution Communicated by the Director-Proposals from Staff & Students




DIRECTOR
K.L.S. Institute of Management
Education & Research

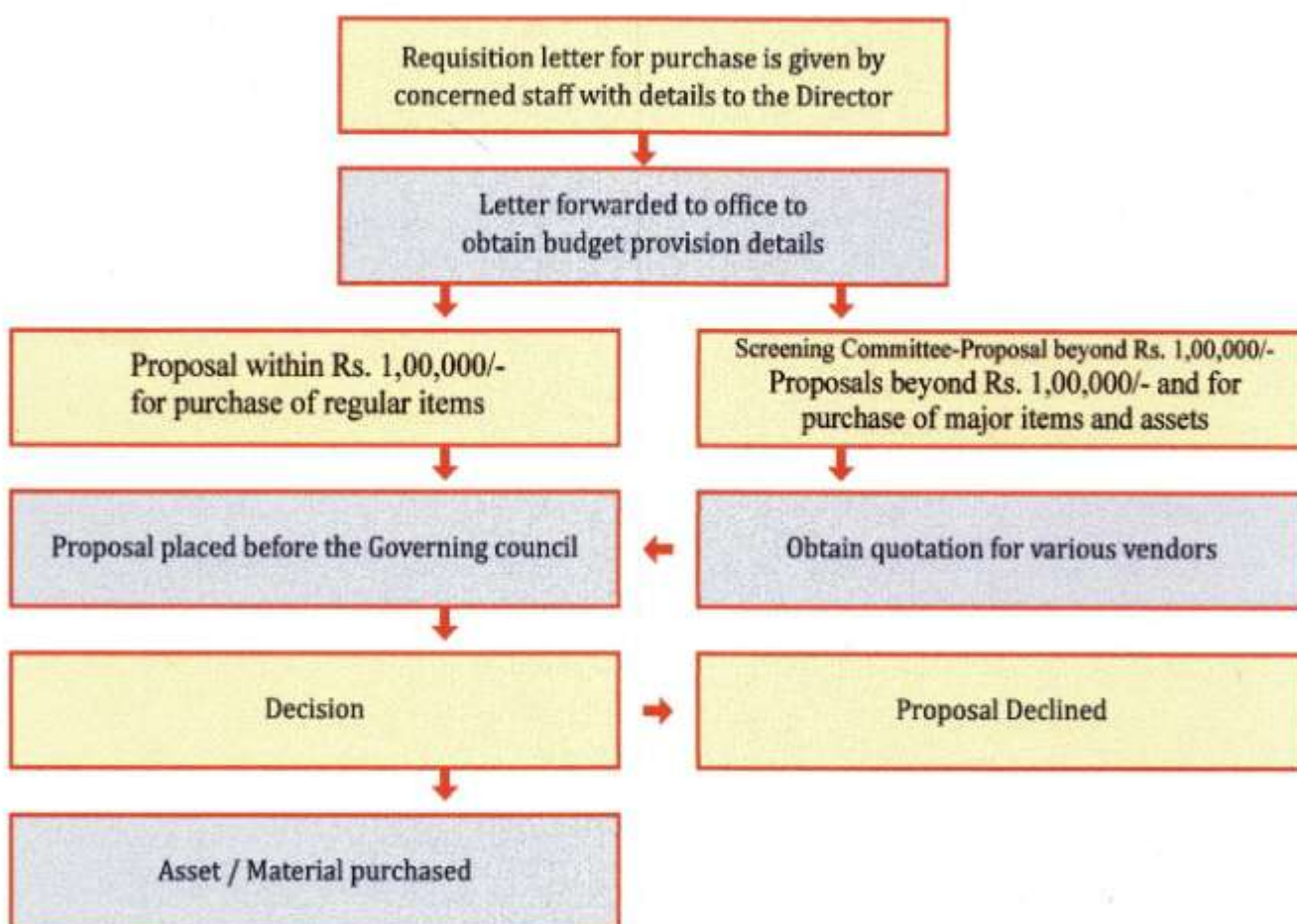



S. Nikkanna
VICE-CHANCELLOR
K.L.S. Institute of Management
Education & Research Belagavi

KLS - IMER, Autonomous, Belagavi

4.4.2 There are established, Systems and Procedures for maintaining and utilizing Physical, academic & support facilities -classrooms, laboratory, library, sports complex, computers etc. (Institution's Policy with details of systems and procedures)

Materials and Assets Procurement Process




DIRECTOR
KLS, Institute of Management
Education & Research

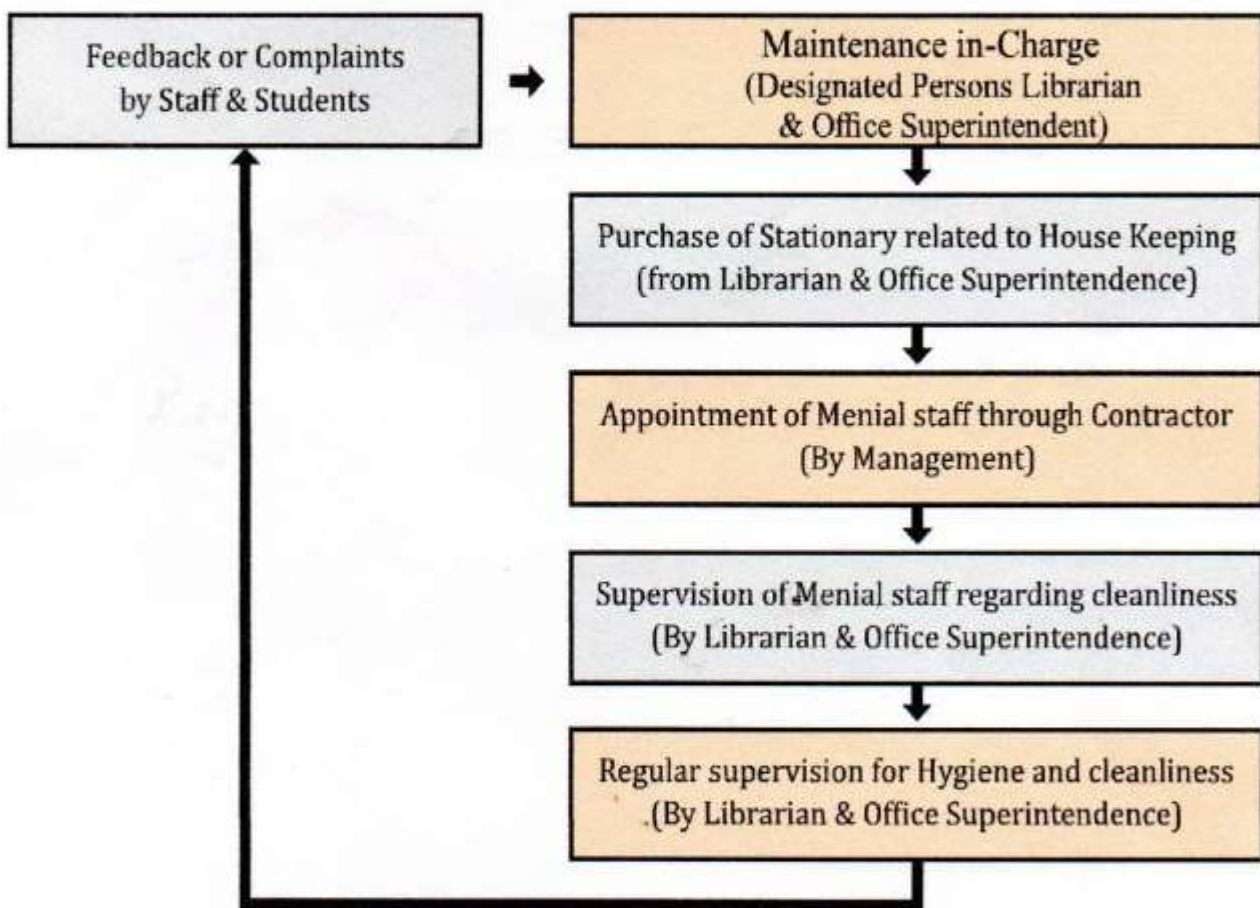



(Prof. Sumanth Desai)
IT Dept.

KLS - IMER, Autonomous, Belagavi

4.4.2 There are established, Systems and Procedures for maintaining and utilizing Physical, academic & support facilities -classrooms, laboratory, library, sports complex, computers etc. (Institution's Policy with details of systems and procedures)

House Keeping Maintenance & Procurement of House Keeping Materials Process




DIRECTOR
K.L.S. Institute of Management
Education & Research

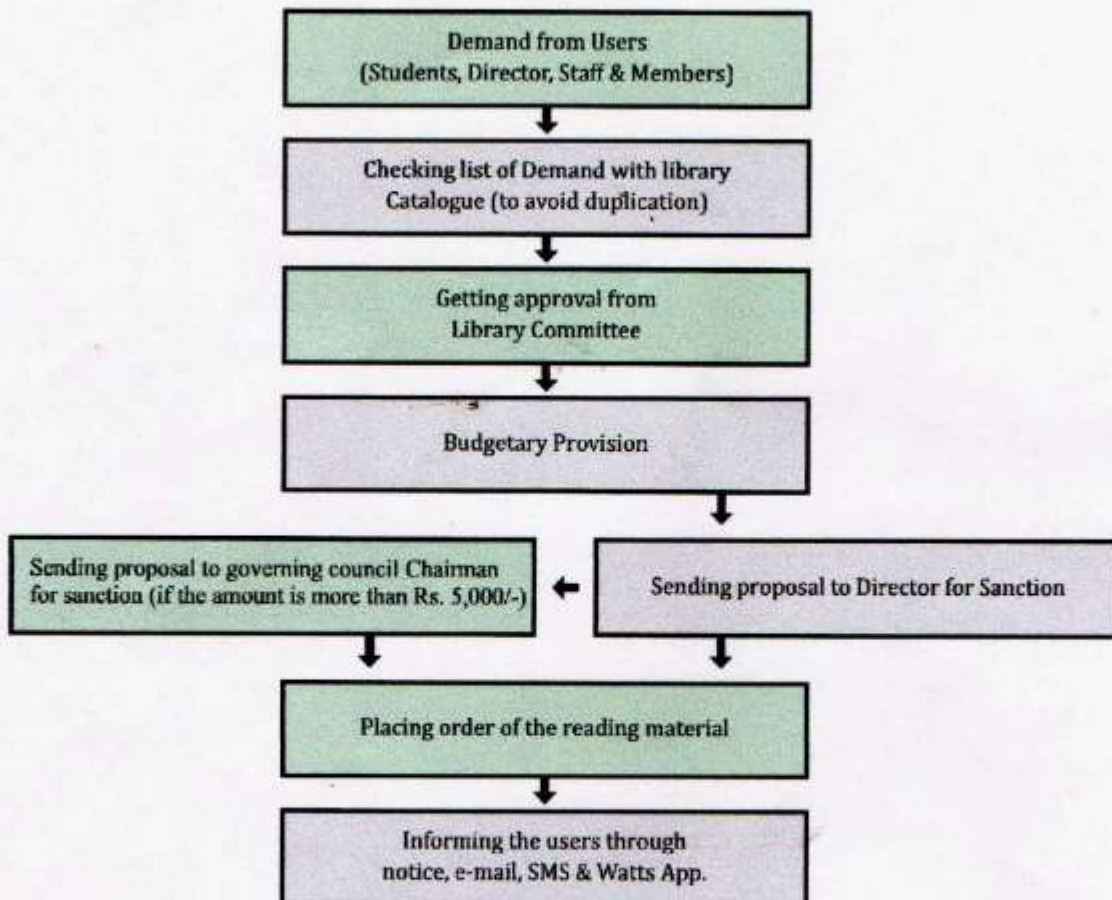

LIBRARIAN
K.L.S. Institute of Management
Education & Research Belgaum



KLS - IMER, Autonomous, Belagavi

4.4.2 There are established, Systems and Procedures for maintaining and utilizing Physical, academic & support facilities -classrooms, laboratory, library, sports complex, computers etc. (Institution's Policy with details of systems and procedures)

Library (Knowledge Resource Centre) Reading Materials Procurement Process

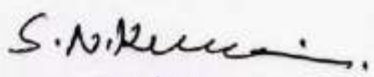


Knowledge resource center – process of stock verification of books




DIRECTOR
K.L.S. Institute of Management
Education & Research

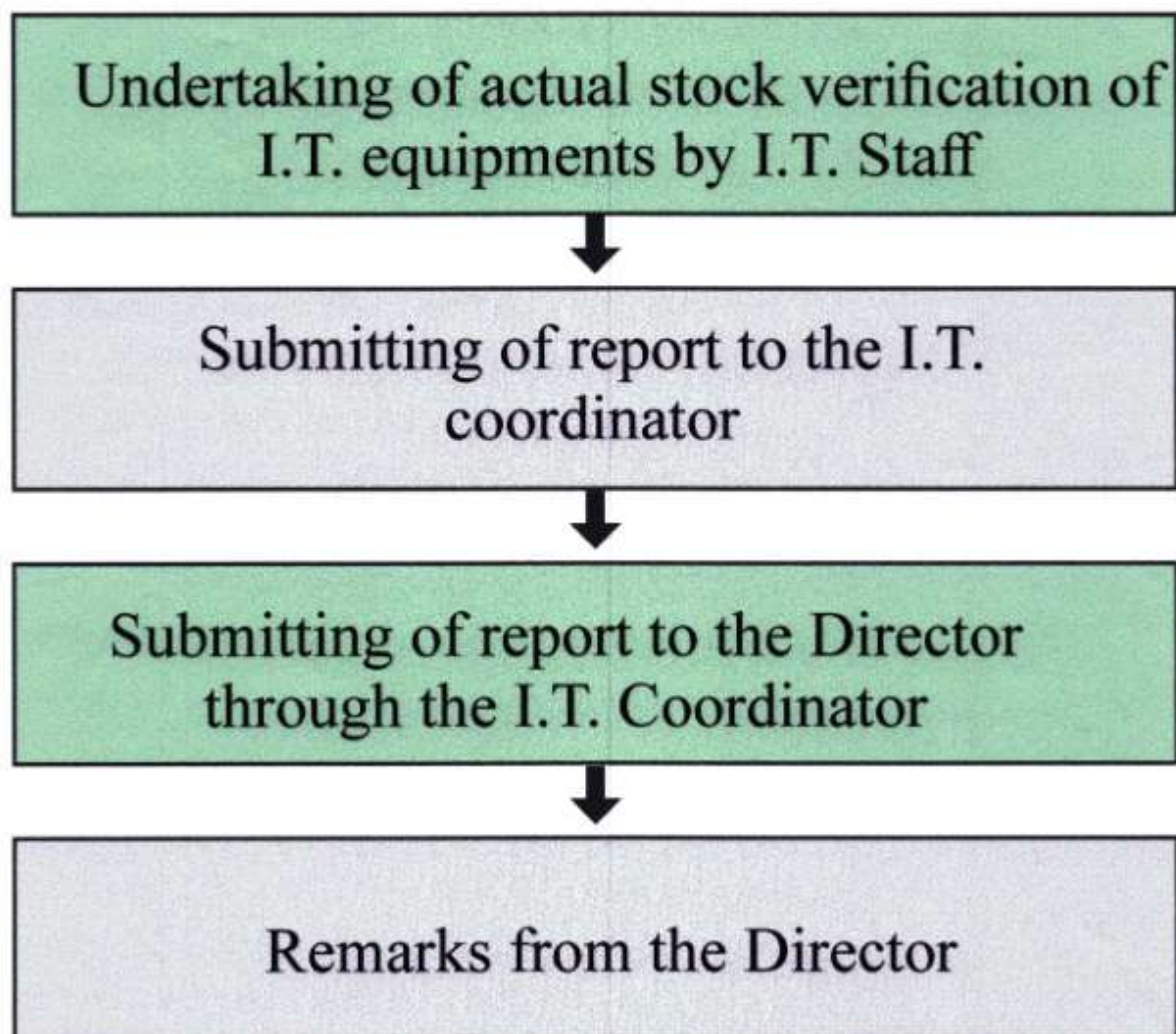



LIBRARIAN
K.L.S. Institute of Management
Education & Research Belgaum

KLS - IMER, Autonomous, Belagavi

4.4.2 There are established, Systems and Procedures for maintaining and utilizing Physical, academic & support facilities -classrooms, laboratory, library, sports complex, computers etc. (Institution's Policy with details of systems and procedures)

IT Centre - Process of Stock Verification of I.T. Equipments




DIRECTOR
K.L.S. Institute of Management
Education & Research.

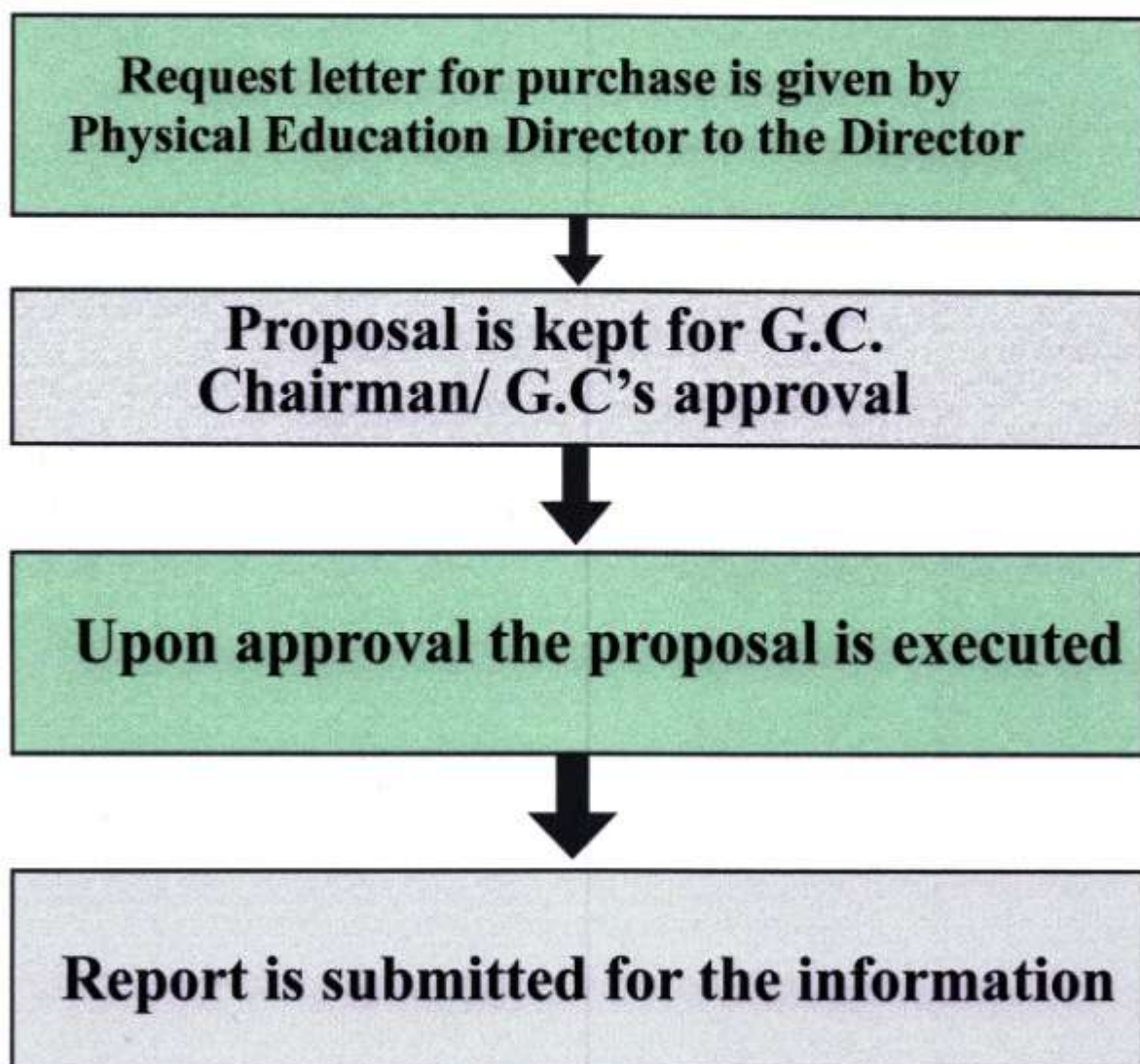



(Prof. Sumanth Desai)
IT Dept.

KLS - IMER, Autonomous, Belagavi


4.4.2 There are established, Systems and Procedures for maintaining and utilizing Physical, academic & support facilities -classrooms, laboratory, library, sports complex, computers etc. (Institution's Policy with details of systems and procedures)

Sports Department - Process Chart for Procurement of Sports & Games Materials




DIRECTOR
K.L.S. Institute of Management
Education & Research




George Rodrigues
Asst Physical Education
Director.